

# User Guide - FLWP1S

## RF Control - Single Zone Dim Touch Wall Panel



### Features

- Use with our Single Colour LED receiver FLDC1S.
- Sensitive brightness adjustment touch slider.
- 2.4GHz wireless technology, control distance up to 30m.
- Pair with one or multiple receivers.
- Battery powered (1 x CR2032).
- LED light indicator on the remote.

### Technical Parameters

- Output signal: RF(2.4GHz)
- Input Voltage: 12-24VDC use LED Driver LEDD-IP1024
- Output Current: 4CH, 3A/CH
- Output Power: 144 - 288W
- Light Type: Single Colour
- Size: 86x86x35 mm
- Remote distance up to 30m within Free Range. Please allow for 12m within areas restricted by obstacles.

### Pairing Guide

Pairing your Wall Panel with each 2.4G RF receiver

- Using the "Match Key"

1. Match, Switch off receiver power, then switch on power again, short press zone key 3 times on the wall panel quickly within 5s after receiver power on, the link has been completed once the connected LED lights flash 3 times. Repeat this process to link further receivers to the wall panel.

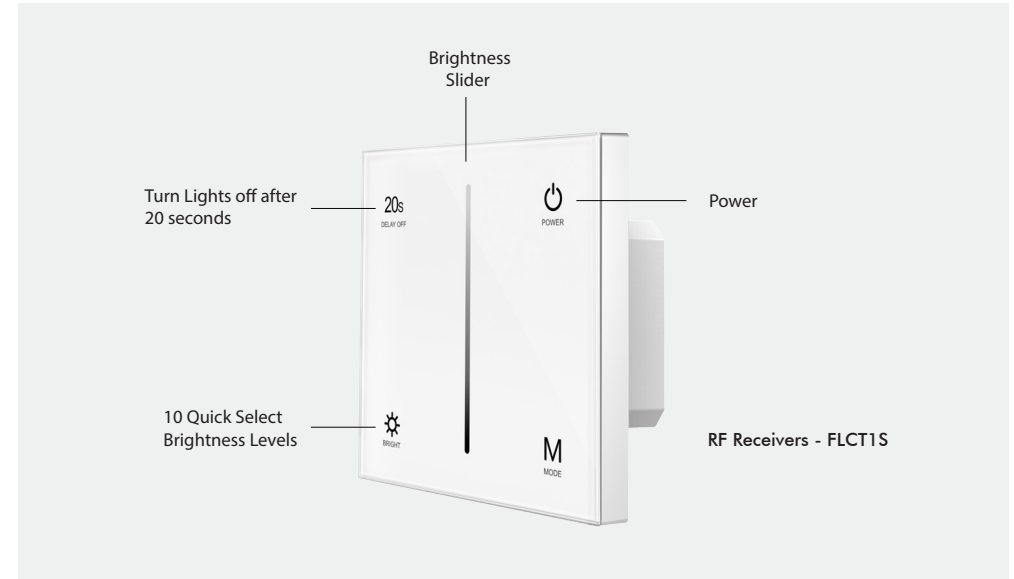
2. To Delete a match: Switch off power to the receiver, then switch-on power again, short press the zone key you are deleting 5 times on the remote within 5s after power on, the unlink has been completed once the connected LED lights flash 5 times.

- At Power Up

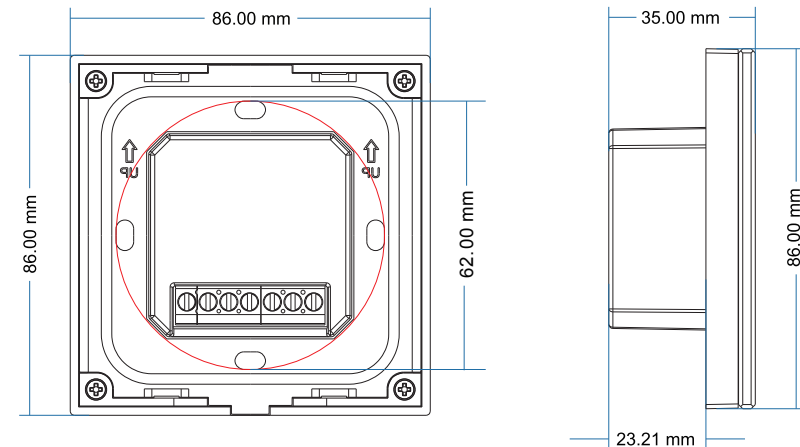
Match the controller with our receiver (Without using the Match Key)

- Match Switch off receiver power, then switch on power again, short press zone key 3 times on the remote quickly within 5s after receiver power on, the link has been completed once the connected LED lights flash 3 times.
1. To Delete a match: Switch off power to the receiver, then switch on power again, short press the zone key you are deleting 5 times on the remote within 5s after power on, the unlink has been completed once the connected LED lights flash 5 times.

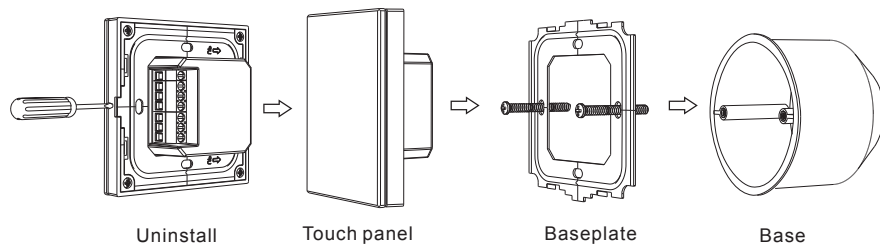
### Key Functions



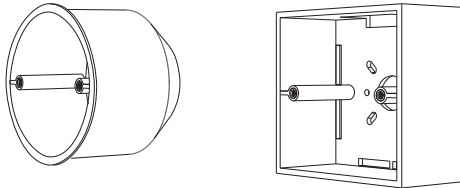
### Dimensions



## Installation Diagram



Typical base as below:



## Safety Information

- The product shall be installed and serviced by a qualified person.
- The product is non-waterproof.
- Good heat dissipation will prolong the working life of the controller, Please ensure good ventilation.
- Please check if the output voltage of any power supplies used comply with the working voltage of the product.
- Ensure all wire connections and polarities are correct
- If a fault occurs please return the product to your supplier. Do not attempt to fix this product by yourself.