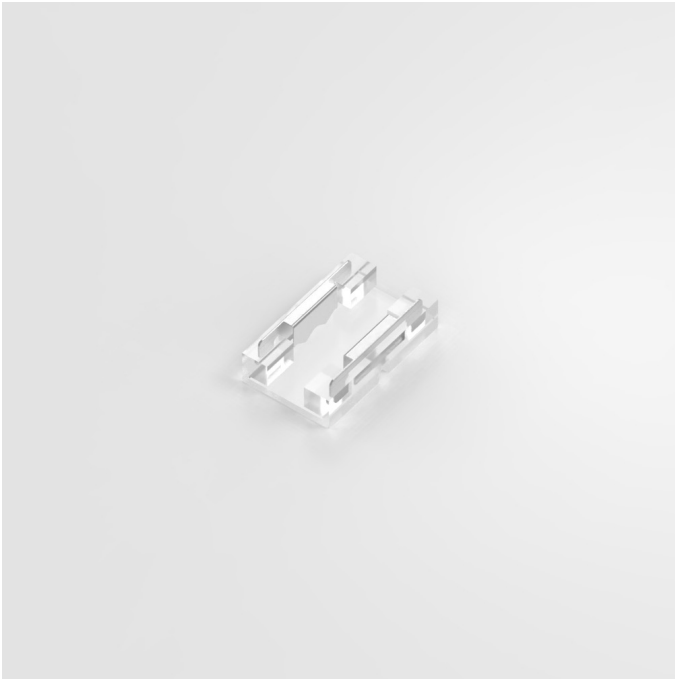


JOINING CONNECTOR

10mm Strip to Strip connector



IP20

DC
24V

5
EXT

Our innovative Mini connectors are compatible with all single colour 10mm strips and designed to fit into even the slimmest aluminium extrusions.

These Joining connectors are used to connect two strips together; simply insert both strips into the corresponding terminals and crimp with pliers to pierce PCB components for a secure finish- **see page 2 for full instructions.**

PRODUCT SPECIFICATION

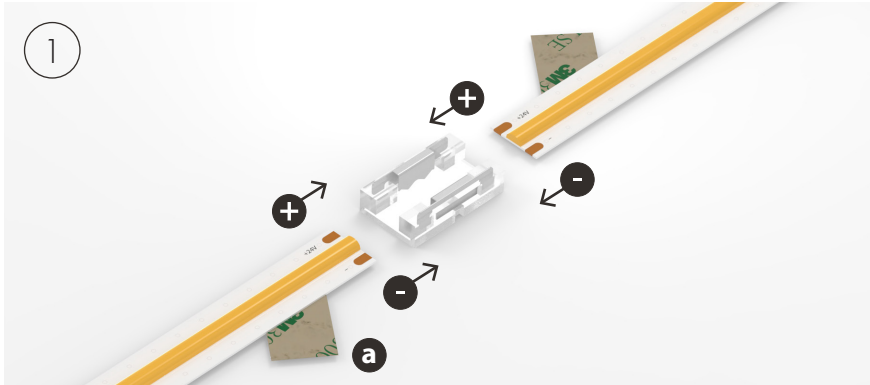
COMPATIBLE STRIP SERIES (IP20):	Linear High Power Dim to Warm Ultra Run
STRIP PCB WIDTH:	10mm
VOLTAGE RANGE:	DC 3-24V
MAX LOAD RATING:	125W (24V)
WIRE ACCEPTED:	N/A
DIMENSIONS:	L15.6*W11.6*H3.3mm
PRODUCT REFERENCE:	FLSS10SML

JOINING CONNECTOR

10mm Strip to Strip connector

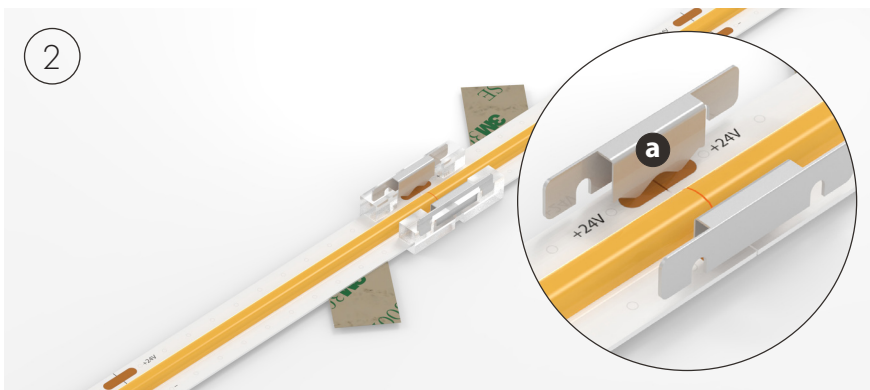
USING A STRIP TO STRIP CLIP CONNECTOR

Our Strip to Strip connectors eliminate the need for soldering, whilst achieving a gapless connection. Simply follow the steps explained below:

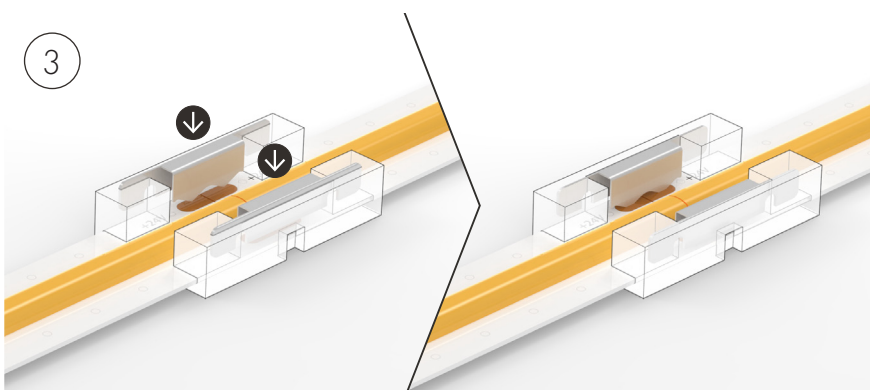


a Peel back the adhesive tape leaving a sufficient amount of bare strip to reach the centre of the clip. Make sure you peel back the tape and accompanying adhesive layer leaving this to re-apply once the connection is complete.

+ - Align the LED Strip ensuring the polarities match.



a Insert the LED Strips into the corresponding terminals ensuring both strips are fitted correctly so that the copper pads line up with the clip connector teeth.



↓ Crimp down on the teeth prongs with pliers to pierce your LED Strip PCB leaving the prongs flush with the connector housing. Check the LED Strips are locked in and the connection is secure.

Re-apply the adhesive tape under the clip connector ready for installation.

Note: Care must be taken when crimping so as not to crack the outer housing.